

R-EFS-0802-30-O-150

10-Port Outdoor Switch PoE+



Accessories

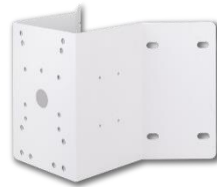
R-PMA



R-RPMA



R-CMA



Technical Specification

Networking Specifications

Total Fast Ethernet Ports	8
Total Gigabit Ports	2
PoE Port @ EX Mode OFF	8x30W PoE ports
PoE Port @ EX Mode ON	2x30W EX PoE + 6x30W PoE ports
Fast Ethernet Ports (RJ45)	-
Gigabit RJ45/SFP Combo Ports	2
Mac Table	4K
Jumbo Frames	1,536 Bytes
Switching Capacity	5,6 Gbps

Power Specifications

Input Voltage	100VAC ~ 240VAC 280VAC 4Hr 300VAC 1min.
Backup Power Input Voltage	48VDC ~ 56VDC
Output Voltage Range /per PoE Port	54VDC PoE IEEE 802.3af (Max. 15.4W) output PoE+ IEEE802.3at (Max. 30W) output
PSE Power Pin Assignment	12(+),36(-)
PoE Surge Protection	6KV
AC Power Surge Protection	40KV
Power Budget	150W

Mechanical Specifications

Dimensions (L x W x H)	315.4 x 245.8 x 118mm
Weight	4.3 kg
Connectors	M16 x 4, M25 x 2

Environmental Specifications

Weather Rating	IP67
Vandal Proof	IK10
Operating Temperature	-20°C ~ 65°C
Storage Temperature	-40°C ~ 85°C
Operating Humidity	5% ~ 95% non-condensing

Certifications

EMC	CE, FCC, VCCI, C-Tick Class A
Safety	EN62368-1
Surge	EN61000-4-5